



# TRANSIT PROJECT DELIVERY ASSESSMENT Status Update

GRTA Projects & Planning Committee

APRIL 13, 2011

# Transit Deliverability Review



- Deliverability review of major transit capital projects
- Outcome – a reasonable estimated duration for each project, along with a schedule risk profile for meeting 10 year target
- Results presented to Regional Transit Committee, GDOT Director of Planning, and Regional Roundtable

# Project Review Classifications



- No Review

- Minor Capital Projects (scope poses no material delivery risk): state of good repair, operations assistance, maintenance, fleet replacement or renewal, new Bus Rapid Transit (BRT) in existing corridors

- Review

- Major Capital Projects (scope with material risk to delivery): new rail lines or expansions, new BRT on new alignments



# Transportation Investment Act Preliminary Summary of Transit Project Submissions



<b>TRANSIT SUBMISSION SUMMARY</b>	<b># OF SUBMISSIONS</b>	<b>COST SUBMISSIONS</b>
<b>DELIVERY ASSESSMENT- NOT REQUIRED</b>	63	<b>\$4.5B</b>
<b>DELIVERY ASSESSMENT- REQUIRED</b>	24	<b>\$10.1B</b>
<b>TOTAL</b>	<b>87</b>	<b>\$14.6B</b>

# Projects/Corridors To Be Reviewed

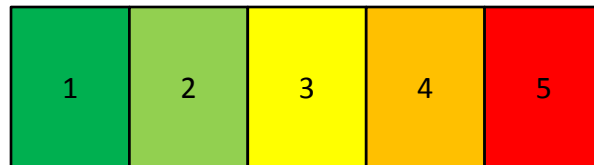
#	CORRIDOR	PROJECT NAME   SEGEMENT	KEY SPONSOR
1	I-285 TRANSIT CORRIDOR	BRT: Cumberland - Perimeter - Doraville LRT: Perimeter - Doraville	Perimeter CID
2	GRIFFIN CORRIDOR	Commuter Rail: Atlanta - Griffin - Macon	Clayton County
3	I-20 EAST CORRIDOR	LRT/BRT: Central Atlanta to Candler Rd/I-20 HRT: Indian Creek to Wesley Chapel	MARTA
4	DOWNTOWN CORRIDOR	HRT: Garnett to Turner Field	MARTA
5	CLIFTON CORRIDOR	HRT: Lindberg to Emory University HRT: Emory University to N Decatur Rd P&R HRT: Y Access Airport / Clifton	MARTA
6	WEST CORRIDOR	HRT Extension: Hamilton Holmes to I-285/MLK	MARTA
7	NW/COBB PARKWAY CORRIDOR	LRT: Downtown to Cumberland	Cobb DOT / Atlanta
		LRT: Cumberland to Acworth	Cobb DOT
8	I-85 CORRIDOR NE LINE	HRT Extension: Doraville - Oakcliff	MARTA
		LRT: Doraville - Oakcliff Rd	Gwinnett County
		LRT: Oakcliff Rd - Gwinnett Village	
		LRT: Gwinnett Village - Indian Trail P&R	
		LRT: Indian Trail P&R - Gwinnett Place Mall	
		LRT : Gwinnett Place Mall - Gwinnett Arena	
9	ATLANTA BELTLINE / STREETCAR	LRT/Streetcar: NE ATL to Downtown	City of Atlanta
		LRT/Streetcar: S Buckhead to Midtown	
		LRT/Streetcar: SE ATL to Midtown	
		LRT/Streetcar: SW ATL to Midtown	

# Estimated Schedule

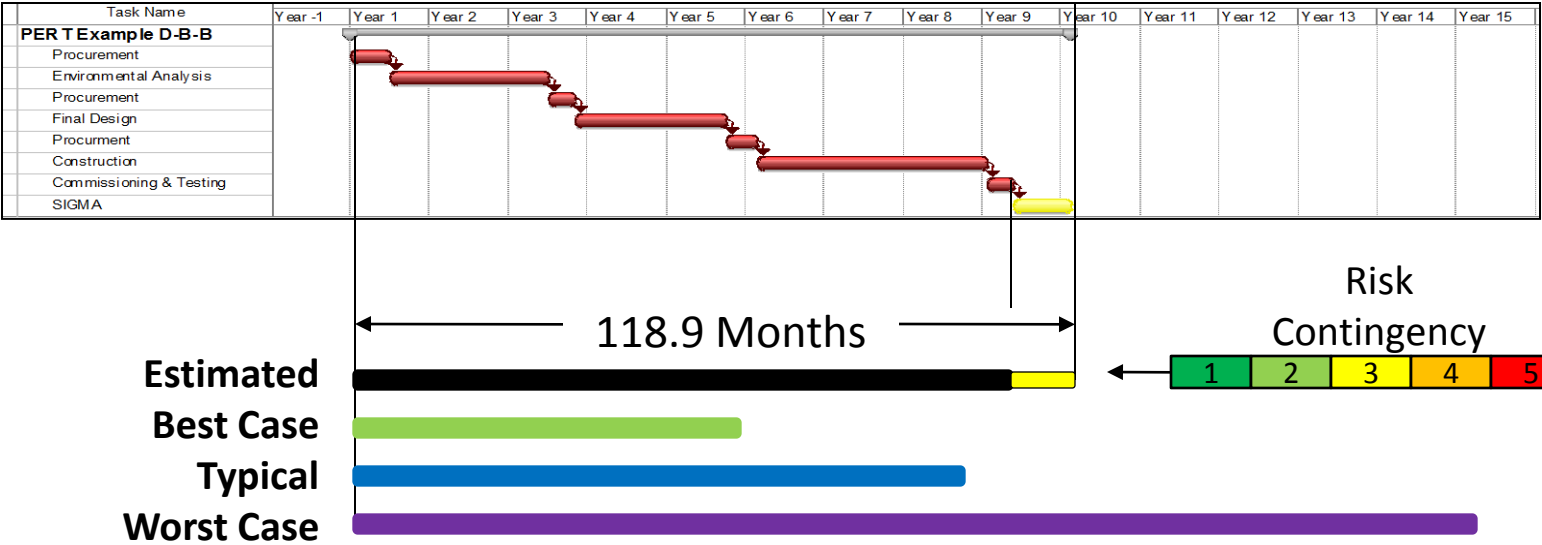


- Schedule with high confidence that the project can be completed on time, using time contingency to offset risk (i.e.- higher risk means more contingency).

Risk  
Contingency



# Example: Programmatic Schedule with Risk Analysis



# Transit Deliverability Review



## Fast-Track Schedule

- February
  - ✓ Consultant procurement
  - ✓ Regional coordination
- March
  - ✓ Consultant contracting
  - ✓ Initial Project Sponsor Meeting
  - ✓ Identify Projects for review
  - ✓ Develop of Draft Risk Evaluation Methodology
- April
  - Project Sponsor Interviews
  - Project Refinement & Clarification with Sponsors
- May
  - Preliminary evaluation of projects utilizing draft methodology
  - Finalize methodology, evaluate projects and screen results for detailed analysis
  - Detailed Analysis: Programmatic Schedules and Risk Profiles
  - Presentation of Results to GDOT, RTC, Regional Roundtable and GRTA.
- Throughout the process - coordination with GDOT, ARC, RTC, Regional Roundtable.



QUESTIONS?