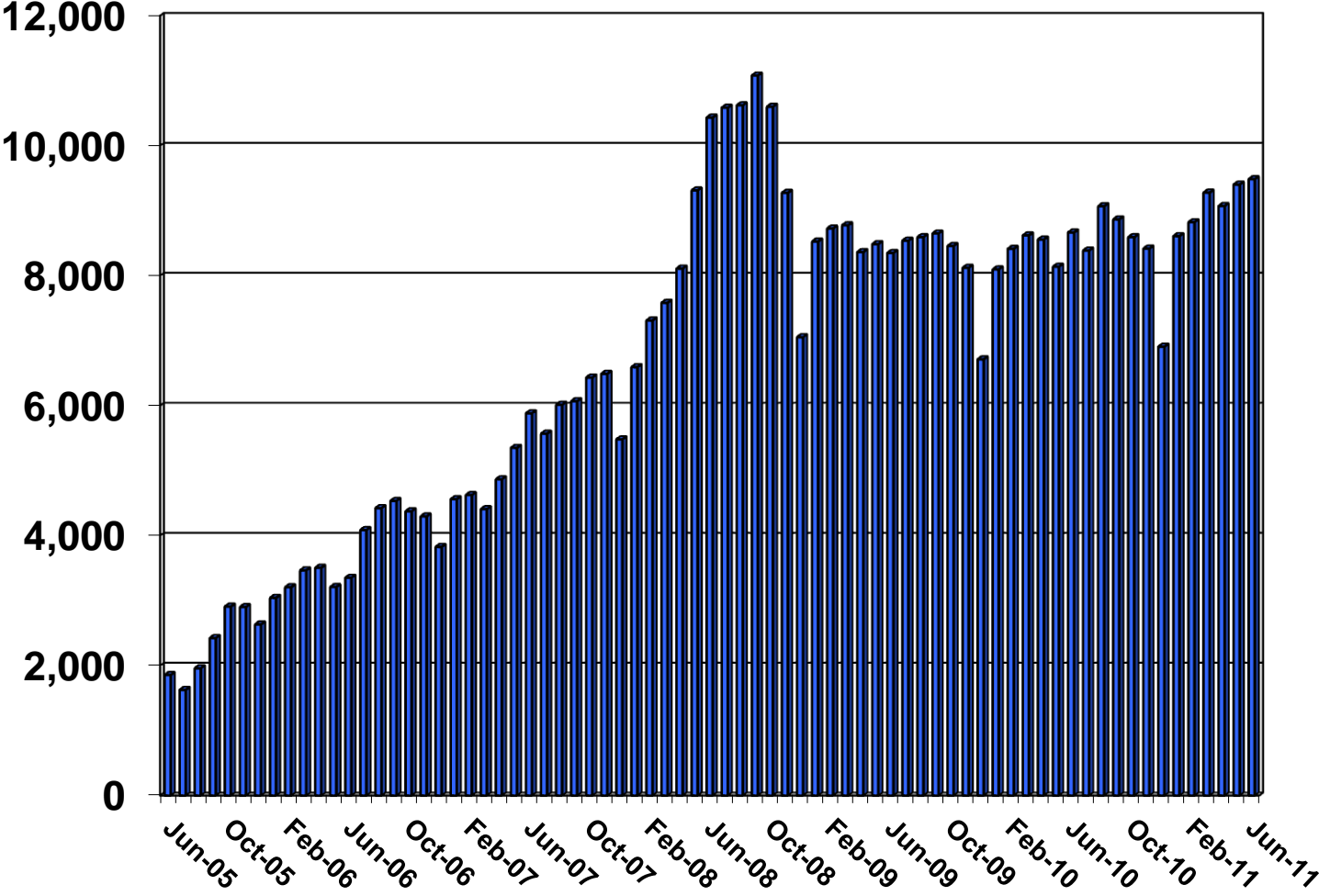
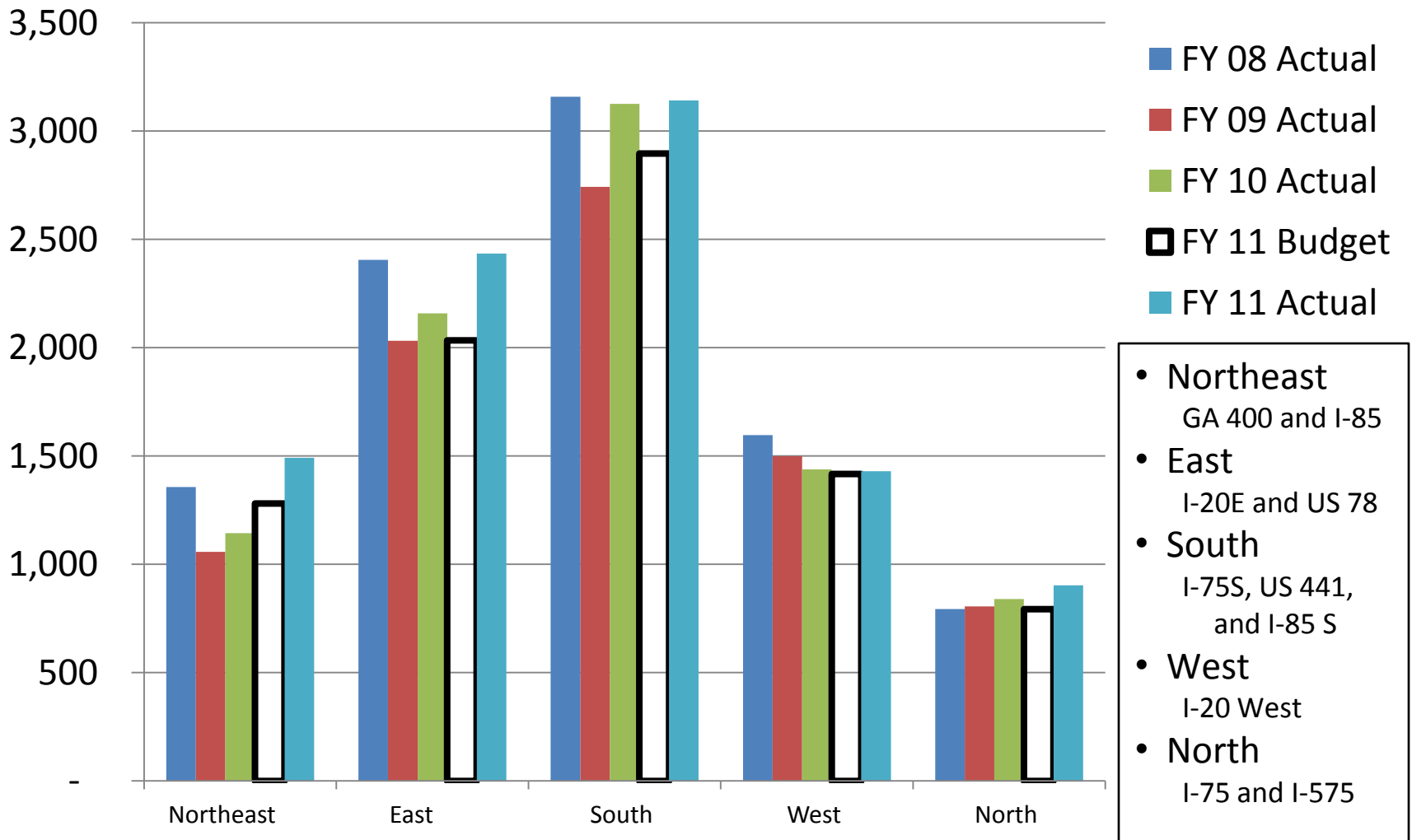


Xpress Ridership by Month



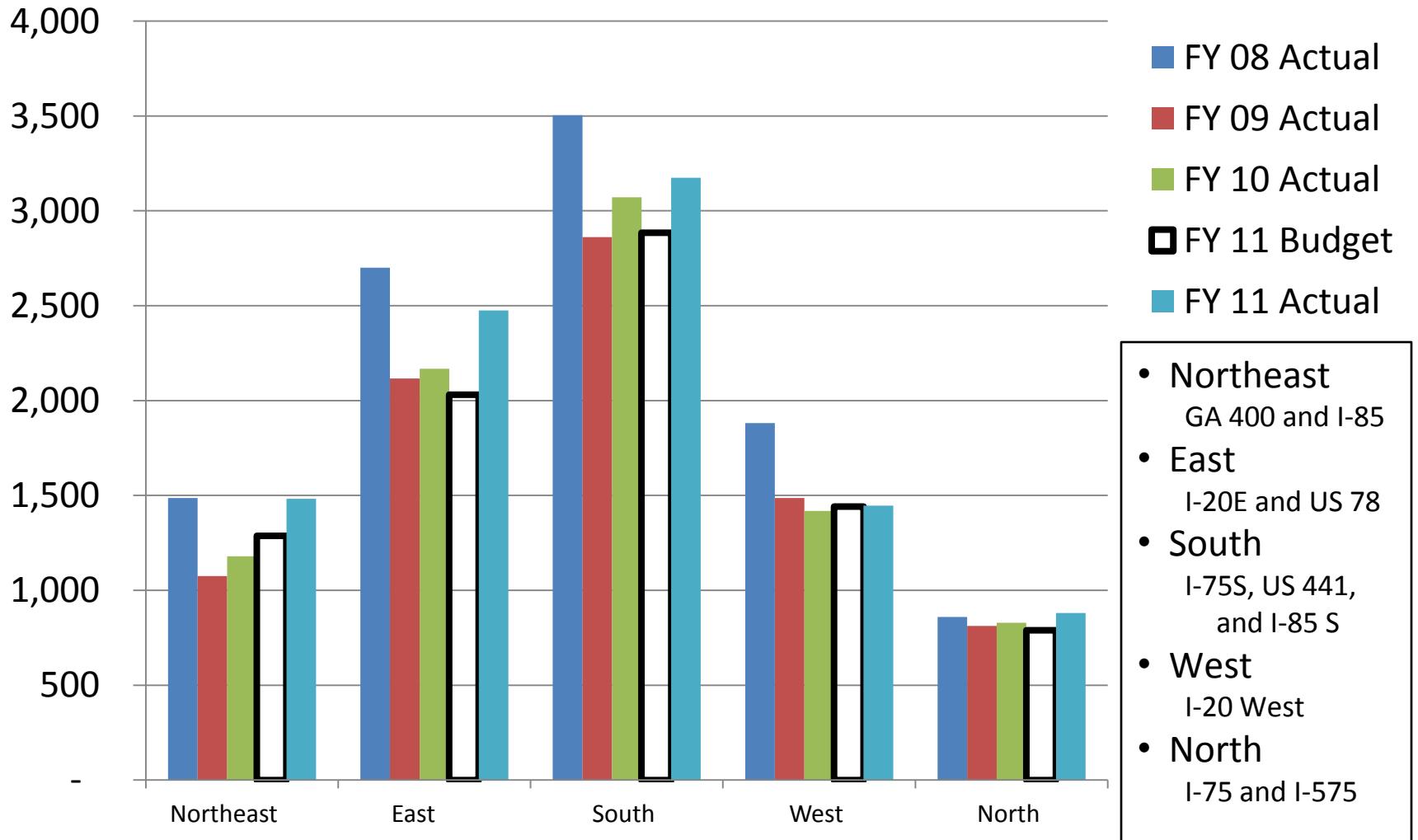
Xpress Riders by Corridor

May 2011



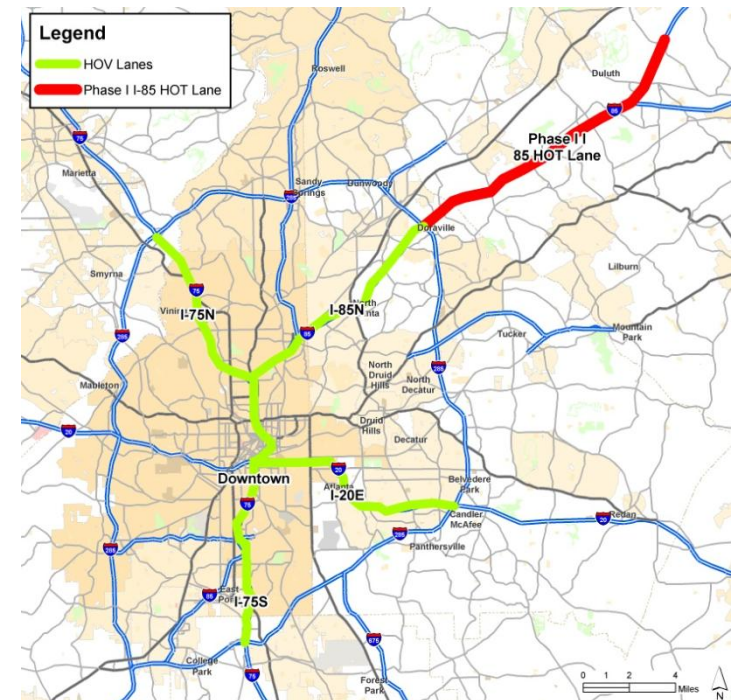
Xpress Riders by Corridor

June 2011



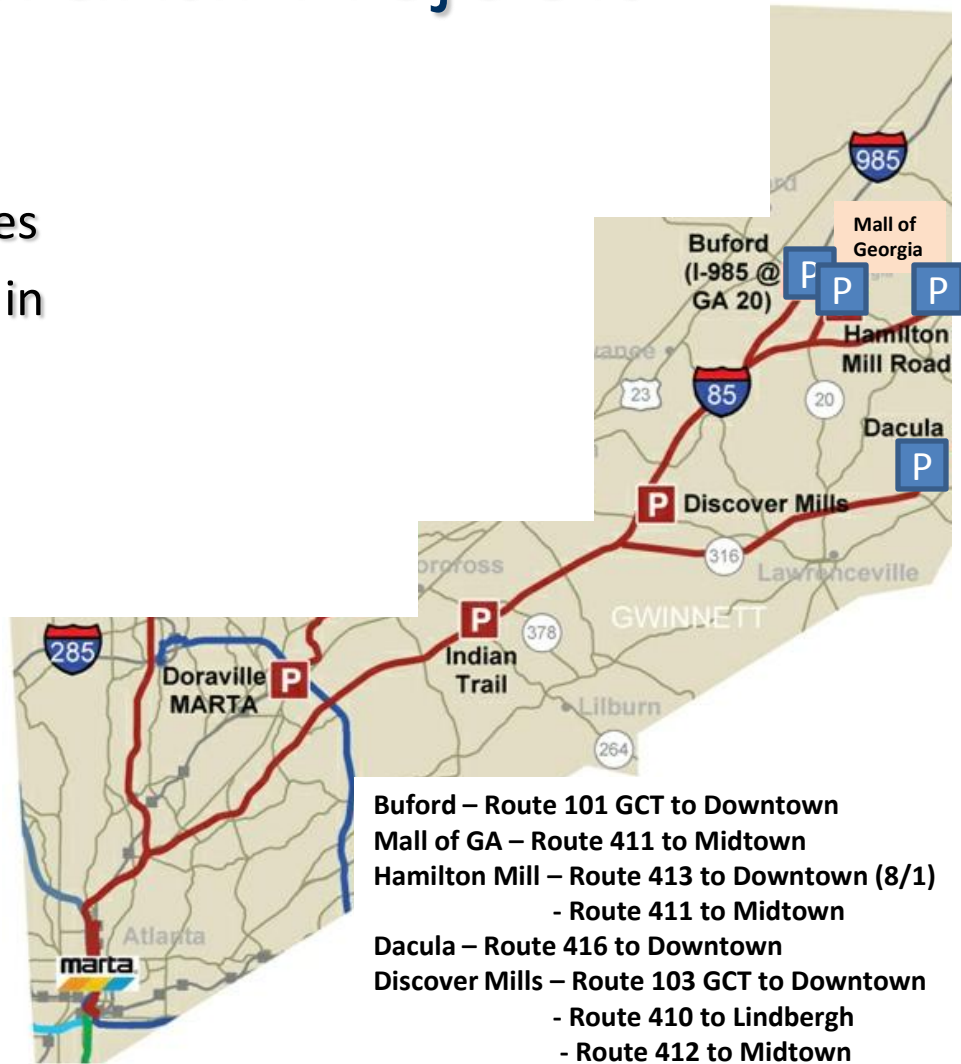
Atlanta Congestion Reduction Demonstration

- USDOT Congestion Reduction Demonstration Program Grant awarded on November 21, 2008
- HOV2+ to HOT3+ conversion of I-85 (@16miles)
- 36 new commuter coaches, 2 park and rides
- Total cost \$182 million, with USDOT contributing \$110 million
 - Public outreach
 - Tolling system development and construction
 - Transit improvements



CRD Transit Projects

- I-85 North HOV to HOT
 - Add 36 coaches on 5 routes
 - Add 2,200 parking spaces in 4 park and ride lots
- Remainder of Region
 - Add 45 coaches on 9 new routes
 - Add 5,000 parking spaces in 8 park and ride lots
 - New operating facilities



- Buford – Route 101 GCT to Downtown
- Mall of GA – Route 411 to Midtown
- Hamilton Mill – Route 413 to Downtown (8/1)
- Route 411 to Midtown
- Dacula – Route 416 to Downtown
- Discover Mills – Route 103 GCT to Downtown
- Route 410 to Lindbergh
- Route 412 to Midtown
- Indian Trail – Route 102 GCT to Downtown



I-85 N Transit Stations / Coaches / Routes

Xpress Stations

Station	Spaces	Open
Mall of Georgia (lease)	750	Aug '10
Hamilton Mill	918	Aug '11
I-985 / GA 20 (expansion)	384	July '11
Hebron Baptist Dacula (lease)	400	June '11

Xpress Coaches

Order Date	# Coaches	Delivery Date
June '10	20	May '11
Nov '11	16	May '12

New Routes

Rt #	From	To	#Buses Planned	Start Date	Average Daily Boardings
411	Mall of Georgia	Mid-Town	5	Aug '10	350
413	Hamilton Mill	Down-Town	8	Aug '11	600
414	Hamilton Mill	Mid-Town	5	July '12	450
416	Dacula	Down-town	8	July '11	600
417	Dacula	Mid-town	5	July '12	450
Total includes 5 spares			36		2,450

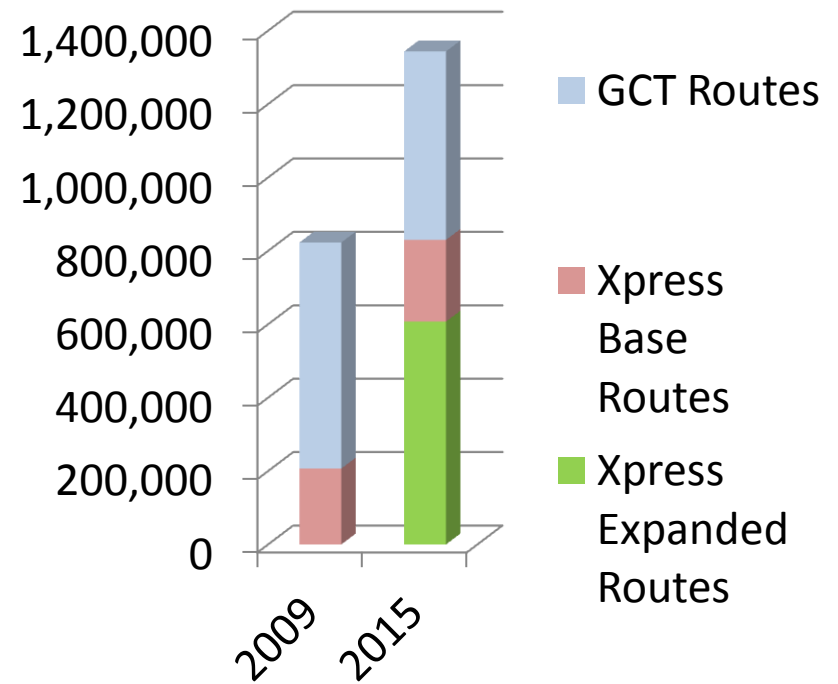
Ridership estimates are average daily riders after 36 months of operation.

I-85 North *Xpress* Services

I-85N Corridor 2015 Service Plan

Route	Park and Ride Lot	Destination	Avg. Annual Boardings
G 101	I-985 and GA 20	Downtown	195,000
G 102	Indian Trail	Downtown	65,750
G 103	Discover Mills	Downtown	253,000
410	Discover Mills	Lindbergh	71,000
412	Discover Mills	Midtown	151,800
411	Mall of Georgia	Midtown	88,550
413	Hamilton Mill	Downtown	151,800
414	Hamilton Mill	Midtown	88,550
416	Dacula	Downtown	151,800
417	Dacula	Midtown	126,500
			1,343,750

I-85N Corridor Average Annual Boardings



Hamilton Mill Xpress Station – Opened August 2011



I-85 North Congestion Reduction Demonstration Funded Xpress Facilities

I-985/GA 20 Park and Ride Expansion – Opened July 2011





West Douglas *Xpress* Station



Jonesboro *Xpress* Station

Jason Getz, jgetz@ajc.com

Other Congestion Reduction Demonstration Funded *Xpress* Facilities



Newnan *Xpress* Station



Big Shanty *Xpress* Station